

T-MATRIX™



NETWORK MANAGEMENT TERMINAL

SOFTWARE DOWNLOAD

NETWORK PROVISIONING

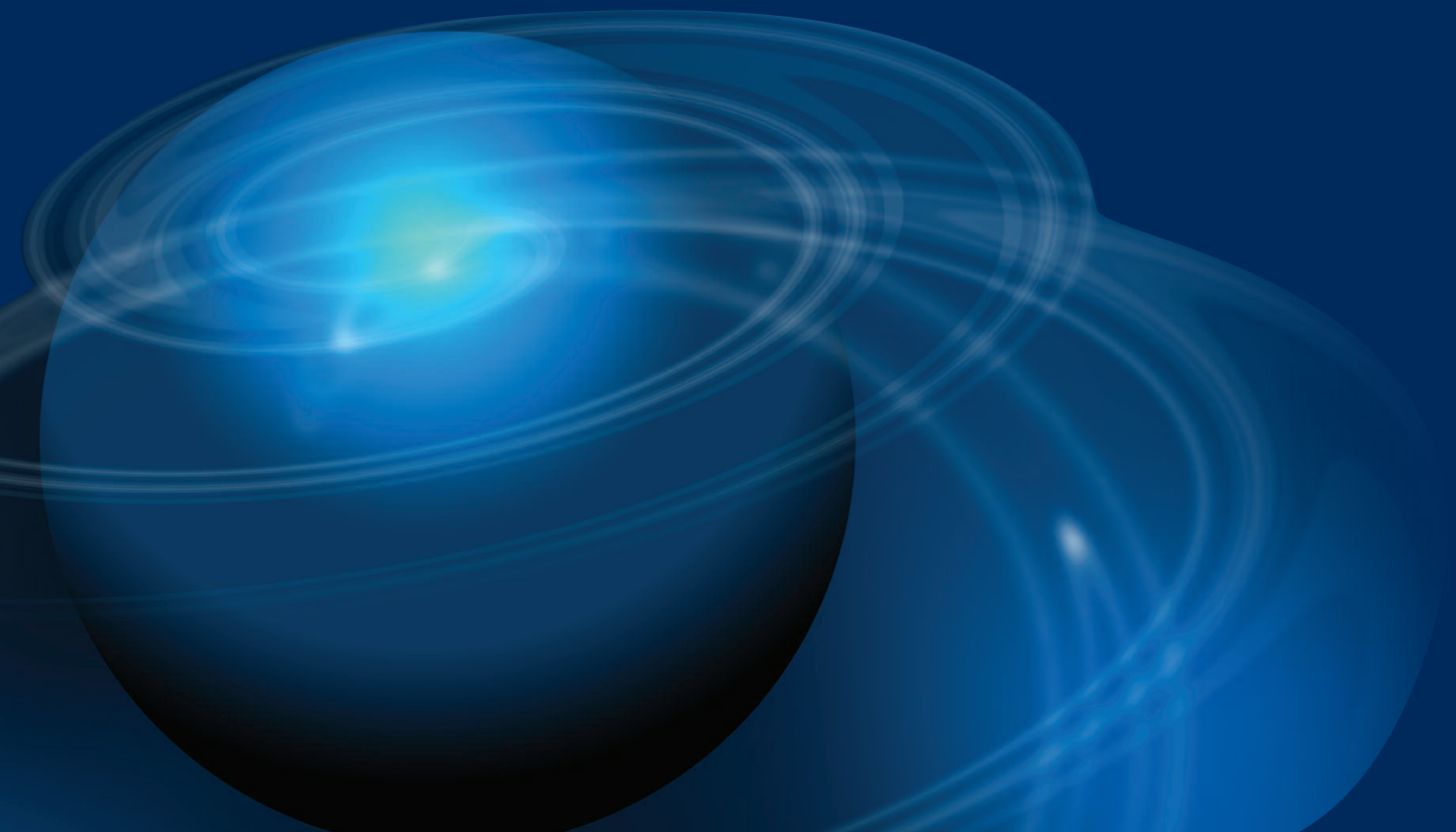
ELEMENT CONFIGURATION

DATABASE MANAGEMENT

REPORT GENERATION

SYSTEM DATA PROCESSING

SYSTEM CONFIGURATION VALIDATION



T-MATRIX™ NETWORK MANAGEMENT TERMINAL



The T-MATRIX™ Network Management Terminal (NMT) facilitates TETRA system management, configuration, administration and maintenance functions. A number of state of the art technologies are utilised, for instance Microsoft Windows for ergonomics and flexibility, SNMP for versatility and IP networking for flexibility. Whilst

normally forming part of the T-MATRIX™ Management Control Centre (MCC), the NMT can in fact be used to manage the whole system from any location within the T-MATRIX™ network.

The primary function of the NMT is to facilitate administration of subscriber and network data, including configuration data, service features data, security-related data, and privileges data. Network management data from the entire T-MATRIX™ system is regularly collated and then stored both locally and centrally. The clear user-interface greatly simplifies the task of network

management, helping to ensure correct initial configuration as well allowing any required changes to be easily implemented. Configuration management functions such as Software Download, Network Provisioning and Element Configuration are also provided. Additionally the NMT allows the operator to view Call Data Records on the basis of various selection criteria.

With the advanced capabilities of the Network management monitoring facilities, any faults that occur on the network can often be corrected before they become a problem to the end users. An operator can also

monitor the network and can take decisions on how to optimise the network before capacity problems arise.

For systems employing encryption and/or authentication, a further type of NMT, NMT-Secure is also available. The NMT-Secure is used for the purpose of securely administering encryption and authentication information for the TETRA System. Since this information is sensitive, specific checks are made to ensure that only authorised personnel using authorised terminals can access this functionality.

TECHNICAL DATA

NMT Functions:

Configuration Management

- Software Download (Infrastructure Software)
- Network Provisioning
- Element Configuration
- Database Management
- Report Generation
- System Data Processing
- System Configuration Validation

Subscriber Management

- Addition and Deletion of user profiles
- Modification of user profiles
- Enable/Disable Terminals
- Provide, modify and withdraw Services
- Dynamic Group Number Assignment
- Barring of PABX to MS calls
- Barring of MS to PABX Calls
- Set up Call Forwarding Unconditional
- Call Retention

Other

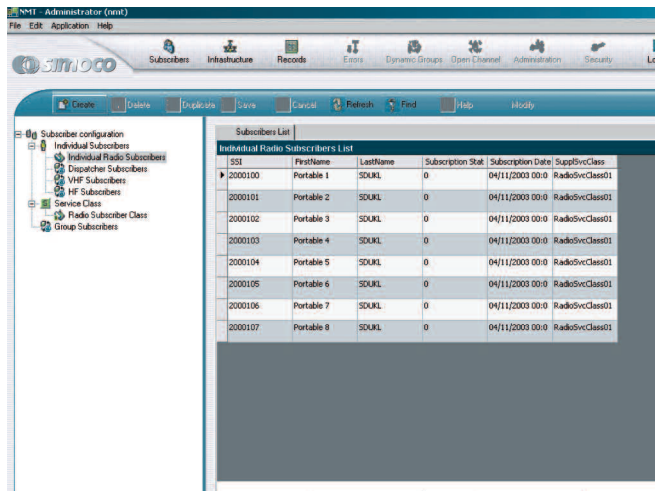
- User Authentication
- Fault Detection & Management (SNMP)

Interface to T-MATRIX™ Network

RJ45 Ethernet port (10/100BaseT)

Physical options

- The NMT can be supplied as:
- Free-standing desk-top configuration, complete with monitor, keyboard and mouse. Requires connection to AC mains power.
 - Rack-mounted configuration complete with rack-mounted monitor, keyboard and mouse. DC powered via the rack.
 - Portable laptop configuration with reduced functionality. This would typically be used by mobile maintenance crews rather than Network Administrators, although it would suit any purpose in a small system. AC or battery powered.



Typical T-MATRIX™

Network Management Terminal Screen Display

